

S2 SERIES

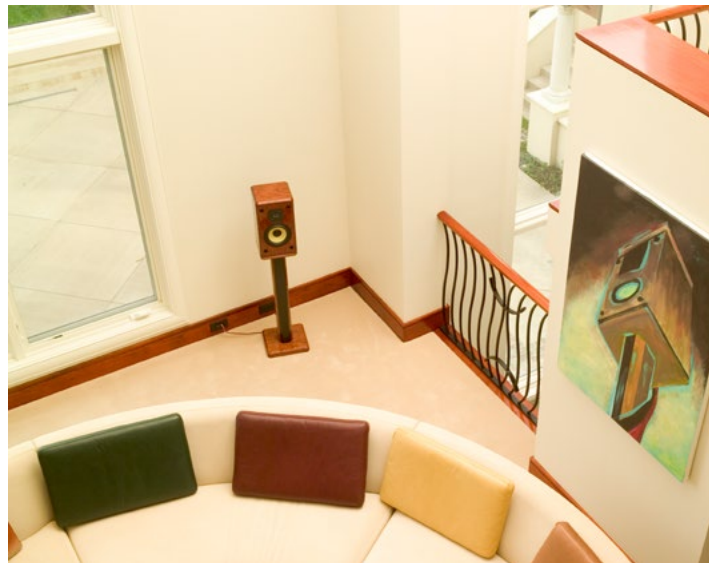
S2 • S2.T • S2.iw • S2.w • S2.c • S2.l • S2.r

The S2 Series incorporates an S4X® Crossover that has been optimized to deal with challenging acoustic properties presented by small rooms and edge/corner/ceiling mounting. When you have a tricky installation, this series is designed to round out a theater system, with each speaker tuned specifically for its intended application.

The S2.c, S2.l, and S2.r are designed for tough ceiling, wall, and corner mounting. They utilize a modified S4X crossover design to actively

compensate for on-wall baffle effects that degrade sound coming from tight spaces.

Due to their large beveled corners, the S2.l and S2.r can mount on a ceiling or wall, pointing out at 45°. The S2.c features dual beveled corners for vertical corner mounting or horizontal mounting between the ceiling and wall.



S2 SERIES

S2 • S2.T • S2.iw • S2.w • S2.c • S2.l • S2.r

S2



Crossover Frequencies: 2.5 Hz
Nominal Impedance: 4Ω
Frequency Responses: 58 Hz - 22 kHz
Power Handling: 170 W
Tweeter: 1.125" inverted titanium dome
Woofer: 6.5" Kevlar
Dimensions: 15.25" H x 8.5" W x 8" D

S2.iw



Crossover Frequencies: 2.5 Hz
Nominal Impedance: 4Ω
Frequency Responses: 58 Hz - 22 kHz
Power Handling: 170 W
Tweeter: 1.125" inverted titanium dome
Woofer: 6.5" Kevlar
Dimensions: 17.375" H x 13.5" W x 3.875" D
Cutout Dimensions: 16.375" H x 12.5" W

S2.w



Crossover Frequencies: 2.5 Hz
Nominal Impedance: 4Ω
Frequency Responses: 58 Hz - 22 kHz
Power Handling: 170 W
Tweeter: 1.125" inverted titanium dome
Woofer: 6.5" Kevlar
Dimensions: 21.75" H x 8.5" W x 4.25" D

S2.T



Crossover Frequencies: 2.5 Hz
Nominal Impedance: 4Ω
Frequency Responses: 48 Hz - 22 kHz
Power Handling: 175 W
Tweeter: 1.125" inverted titanium dome
Woofer: 6.5" Kevlar
Dimensions: 45.5" H x 8.5" W x 8" D

S2.c



Crossover Frequencies: 2.5 Hz
Nominal Impedance: 4Ω
Frequency Responses: 58 Hz - 22 kHz
Power Handling: 175 W
Tweeter: 1.125" inverted titanium dome
Woofer: 6.5" Kevlar
Dimensions: 15.25" H x 8.5" W x 8" D

S2.l S2.r



Crossover Frequencies: 2.5 Hz
Nominal Impedance: 4Ω
Frequency Responses: 58 Hz - 22 kHz
Power Handling: 175 W
Tweeter: 1.125" inverted titanium dome
Woofer: 6.5" Kevlar
Dimensions: 15.25" H x 8.5" W x 8" D